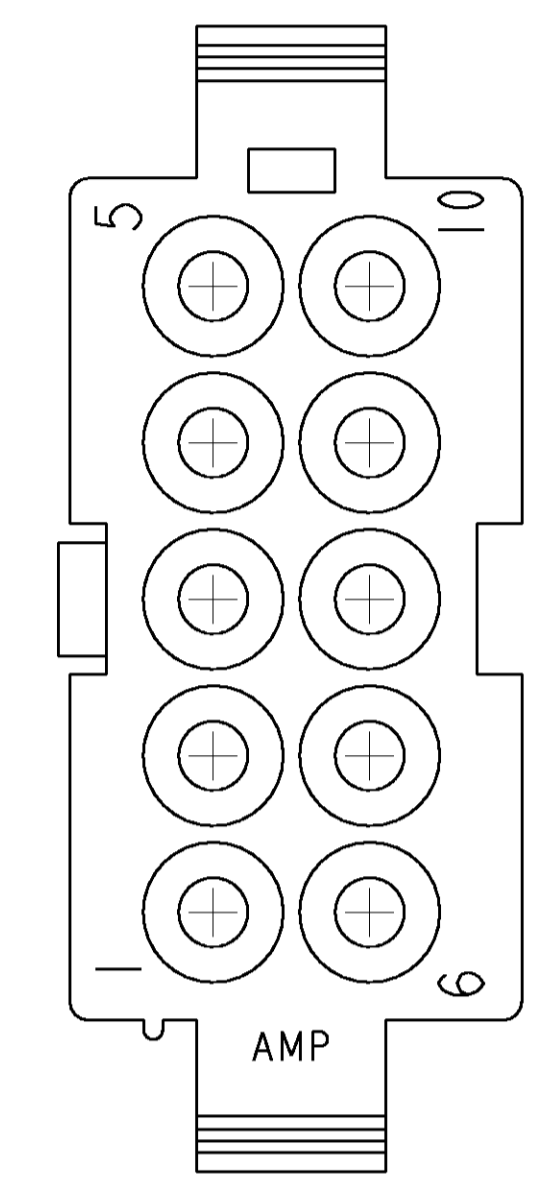
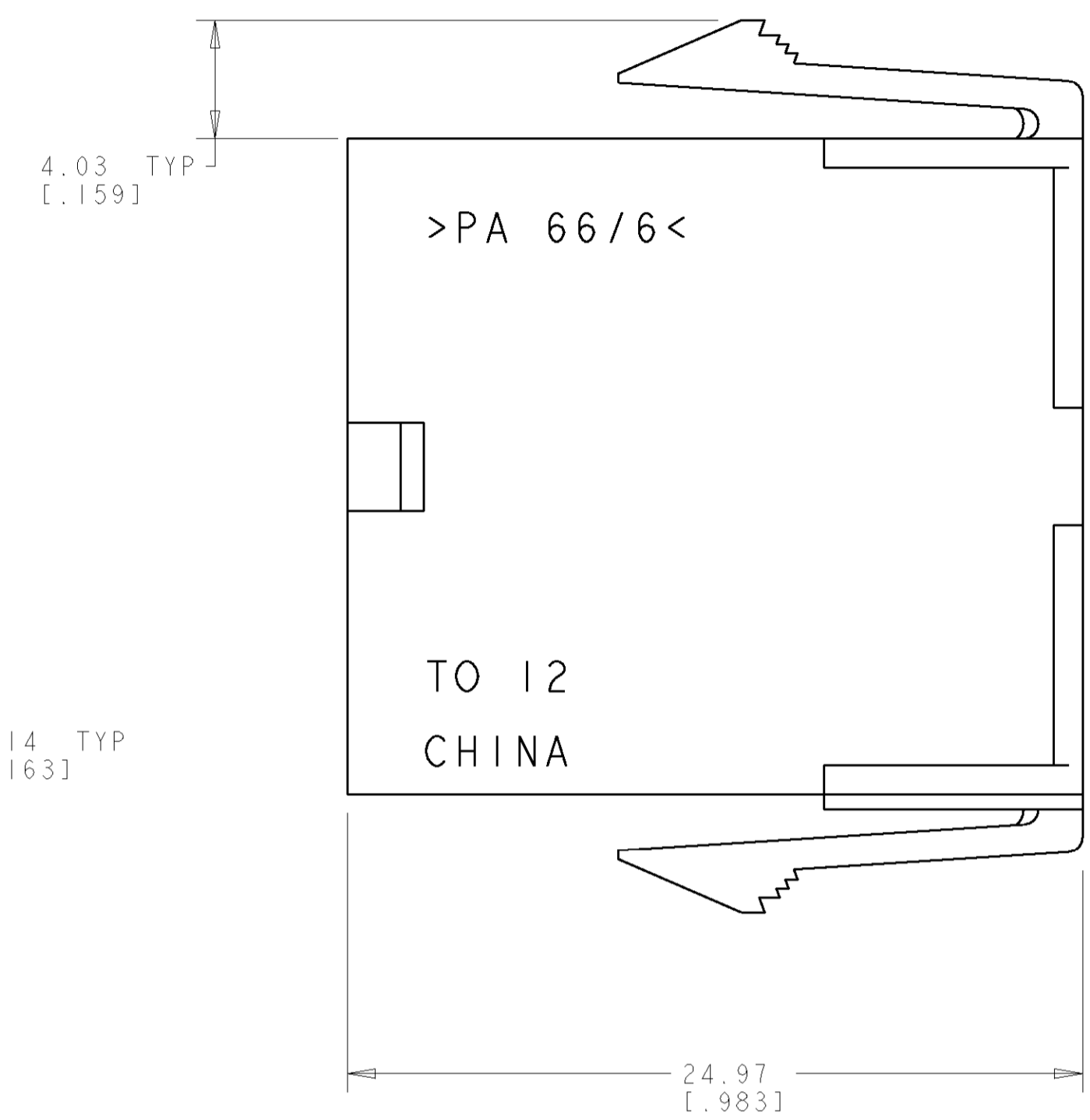
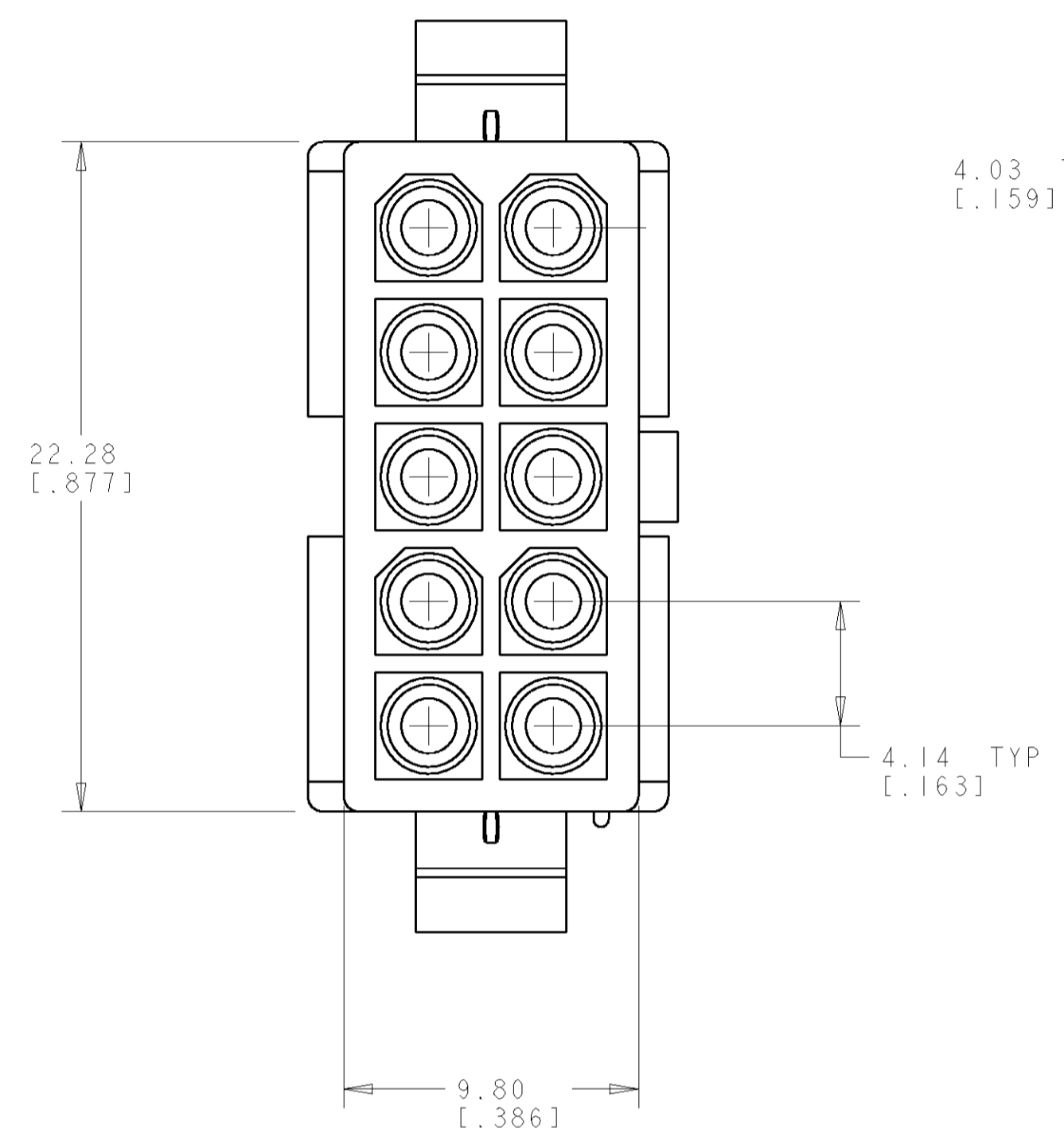
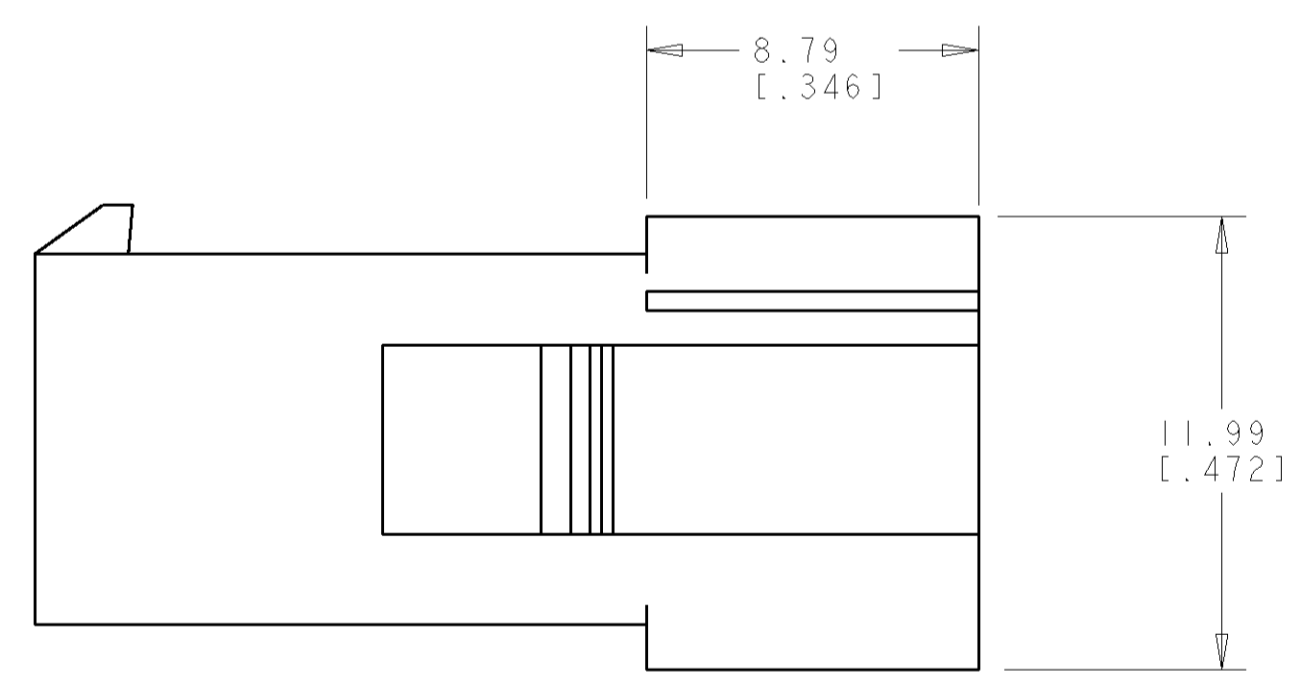
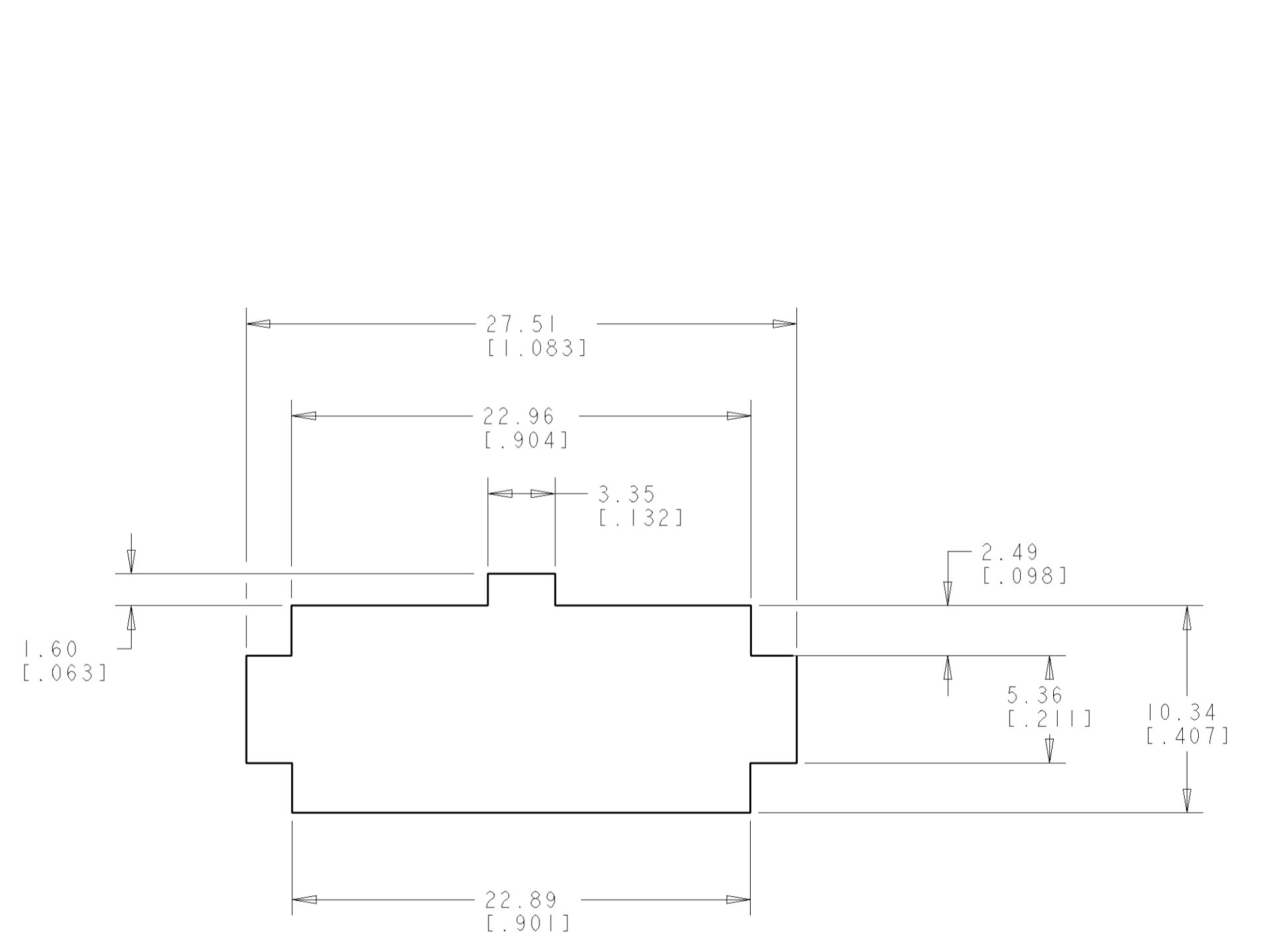


LOC		DIST		REVISIONS			
P	LTR	DESCRIPTION	DATE	DWN	APVD		
B		RELEASED PER 063B-0251-04	23JUN04	KW	CJ		

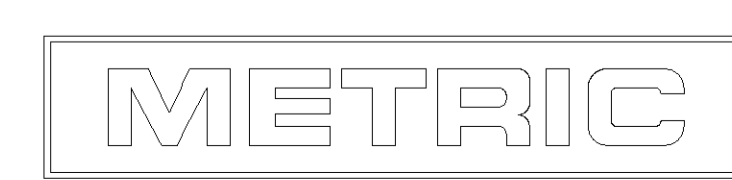


1. APPLICABLE CONTACT P/N: 170539, 170360, 170361, 170362.
2. DIMENSIONS IN BRACKETS ARE IN INCHES.
3. RECOMMENDED PANEL THICKNESS TO BE 0.8-2.0 [0.031-.079].
4. HOUSING INSERTION INTO THE PANEL CUT OUT MUST BE IN THE SAME DIRECTION AS THE PUNCH.



RECOMMENDED PANEL CUT OUT
 SCALE 4:1

794942-1
 PART NUMBER



<small>THE DIMENSIONS IN BRACKETS REPRESENT THE DIMENSIONS OF THE PARTS AS SUPPLIED BY THE MANUFACTURER. DIMENSIONS IN INCHES ARE FOR INFORMATION ONLY. DIMENSIONS IN MILLIMETERS ARE THE DIMENSIONS TO BE USED FOR THE PARTS AS SUPPLIED BY THE MANUFACTURER.</small>		DWN B. WHITAKER 23-JULY-2001	Tyco Electronics Harrisburg, PA 17105-3608
DIMENSIONS: mm [INCHES]		ENR C. JONES 23-JULY-2001	NAME CAP. 10 CIRCUIT, SEALED APPLICATION, MINI UNIVERSAL MATE-N-LOK™
TOLERANCES UNLESS OTHERWISE SPECIFIED: 0 PLC ± 1 PLC ± 2 PLC ±0.13 [0.005] 3 PLC ± 4 PLC ± ANGLES ±40°30'		PRODUCT SPEC APPLICATION SPEC	SIZE A 00779 C=794942
MATERIAL NYLON UL94V-0 NATURAL		FINISH -	WEIGHT - CUSTOMER DRAWING
		SCALE 5:1	SHEET 1 OF 1 REV B